



**London Interdisciplinary Social Science
Doctoral Training Partnership | 2019-20**



Imperial College
London



 Queen Mary
University of London

CONTENTS

Welcome from Director	5
About LISS DTP	9
The Thirteen Thematic Pathways	15
Pathway 1 Health Practices, Innovation & Implementation	18
Pathway 2 Life Course, Psychology & Health	20
Pathway 3 Health, Biopolitics & Social Inequality	22
Pathway 4 Economics, Finance & the World Economy	24
Pathway 5 Work, Organisations & Business Management	26
Pathway 6 Education, Mind & Society	28
Pathway 7 Linguistics, Media & Culture	30
Pathway 8 Urbanisation, Social Change & Urban Transformation	32
Pathway 9 Political Ecology, Energy & Environmental Health	34
Pathway 10 International Development, Conflict & Human Security	36
Pathway 11 Global Order, Violence & Security Practice	38
Pathway 12 Strategic, Regional & Security Studies	40
Pathway 13 Politics, Public Policy & Governance	42
LISS DTP Studentships	47
The Training Programme	52
How to book onto a LISS DTP course	53
Core Training & the Methods in Social Sciences Programme	54
Summary of Indicative Advanced Methods Courses	56
Advanced Methods Training Programme	57
Additional, complementary doctoral programming	75
Key contacts & links	81
Get involved with LISS DTP	83
Notes	84



Welcome from Director



Welcome to the **London Interdisciplinary Social Science Doctoral**

Training Partnership (LISS DTP), funded by the UK's **Economic & Social Research Council (the ESRC)** and support from all three partners. This collaboration between **King's College London**,

Imperial College London, and **Queen Mary University of London** is committed to the provision of studentships and postgraduate social science training across our three institutions.

LISS DTP is uniquely interdisciplinary, enabling our research students to acquire the very best social science methods and subject-specific training that our three world-class universities can offer. As well as being located in your specific department, you can also join other research students and staff in one of our 13 Pathways where you will have access to globally recognised interdisciplinary research teams based at King's, Imperial or Queen Mary. For ESRC-funded students, your supervisor and members of the LISS DTP team will advise on your social science methods as well as subject-specific training requirements in accordance with expectations related to your research interests and what we and the ESRC consider to be the appropriate range and depth of methods training in the social sciences. Core as well as advanced level training is provided across the partnership, and includes short courses, workshops, reading groups, seminars and conferences.

LISS DTP also provides valuable additional activities, including internships, collaborative activities with public and private sector organisations, as well as additional training relating to impact, the dissemination of research, and career development.

The social science community at King's, Imperial, and Queen Mary, working through our DTP, looks forward to engaging with you in the years ahead.

Professor Leila Simona Talani PhD
Director, ESRC London Interdisciplinary
Social Science DTP



About LISS DTP



In 2016, the **Economic & Social Research Council (ESRC)** commissioned a new UK-wide doctoral training network to replace the first of its kind, which had been established in 2011. The existing network of 21 accredited universities and consortia became a group of 14, which includes the **London Interdisciplinary Social Science Doctoral Training Partnership (LISS DTP)**, led by **King's College London** in partnership with **Imperial College London** and **Queen Mary University of London**. This new partnership integrated the existing student communities in the ESRC-funded King's Interdisciplinary Doctoral Training Centre (KISS DTC), Queen Mary students who are part of the London Social Science Doctoral Training Centre (LSS DTC), and doctoral students across Imperial College whose work intersects with social science.

The LISS DTP grant, valued at approximately £28 million, will support six yearly cohorts of studentships, doctoral training programme, and postdoctoral fellowships. A variety of studentship formats will be available each year, including: 1+3 (Masters + PhD funding), +3 (PhD funding), collaborative (CASE) studentships involving cooperation with non-academic partners, and cross-Research Council funded awards. More information on LISS DTP's studentships is available on page 47.

LISS DTP provides social science research students with a unique opportunity to join and develop a research community that springs from the interface between the social science disciplines and health and medicine, the natural sciences, engineering and the arts & humanities. This partnership is uniquely placed to provide the interdisciplinary training that tomorrow's global challenges demand. The majority of LISS DTP training is available to any doctoral student across the partnership, regardless of whether they hold a LISS DTP studentship. Training is designed and led by academics across the partnership, drawing upon unique areas of research strength and expanding research collaboration where shared expertise exists.

LISS DTP will:

- 1 Support world-class training to address key research priorities and global societal challenges across a breadth of inter-connected social science disciplines.

- 2 Provide research training that integrates students' individual transferable skills requirements with a rigorous and flexible programme of core and advanced social science training. More information about our core (foundation level) training is available on page 54. Examples of advanced methods training that is likely to run throughout the duration of LISS DTP can be viewed on page 56.
- 3 Allow PhD students to innovate, asking new questions and developing new frameworks for understanding in preparation for future employment that will enrich the wider social science base nationally and internationally.
- 4 Train social science research students to work collaboratively with peers and research users alike, and to have a global outlook in career development, employability, entrepreneurship, public engagement and impact.

The wide array of social science research supported by LISS DTP is representative of the strength of research cultures across the three partners. Thirteen thematic Pathways exist to structure this research, and doctoral students who affiliate with LISS DTP will be aligned to one of them. More information on each of these Pathways, and the Masters programmes at each institution that feed into them, is available on page 15. The Pathways are clustered into five broad strategic research areas: **1) health, wellbeing and social inclusion, 2) economics & business, 3) language, culture & education, 4) the environment & urban life and 5) security & governance.**

LISS DTP will continue to expand the work of previous doctoral training centres to establish a major academic venture between our three partners, strengthening research cultures and providing community and support for our social science doctoral students. This brochure is a result of initial work in this regard, and we welcome further contributions from students and staff. If you are interested in running a course, seminar, workshop or reading group, please see page 83 for how to get involved.





The Thirteen Thematic Pathways

L ISS DTP runs a growing programme of social science research methods training and includes thirteen thematic Pathway groups. This section introduces each Pathway: the Pathway Leads, the research focus of the Pathway, and the Masters programmes that are linked with it. You can affiliate with a relevant Pathway for you at any stage during your PhD and benefit from the additional subject-specialist training options associated with it. The linked Masters programmes are also shown as a guide if you do not already have a Masters degree for choosing an appropriate option if you apply for a 1+3 (Masters + PhD) studentship award. If you are awarded a +3 studentship, you may also be able to audit modules from the listed Masters courses. The thirteen Pathways cut across academic departments and faculties at our three partner institutions, and are organised into five broad research areas:

- Health, Well-being & Social Inclusion
- Economics & Business
- Language, Culture & Education
- The Environment & Urban Life
- Security & Governance

The thirteen thematic Pathways

Pathway 1 Health Practices, Innovation & Implementation

Pathway 2 Life Course, Psychology & Health

Pathway 3 Health, Biopolitics & Social Inequality

Pathway 4 Economics, Finance & the World Economy

Pathway 5 Work, Organisations & Business Management

Pathway 6 Education, Mind & Society

Pathway 7 Linguistics, Media & Culture

Pathway 8 Urbanisation, Social Change &
Urban Transformation

Pathway 9 Political Ecology, Energy &
Environmental Health

Pathway 10 International Development, Conflict &
Human Security

Pathway 11 Global Order, Violence & Security Practice

Pathway 12 Strategic, Regional & Security Studies

Pathway 13 Politics, Public Policy & Governance

Additional information on the Pathways, the training they offer and their linked Masters programmes can be found by clicking the ‘Thematic Pathways’ dropdown menu on the LISS DTP website www.liss-dtp.ac.uk

HEALTH, WELL-BEING & SOCIAL INCLUSION	
1. Health Practices, Innovation & Implementation	<p>Peter Schofield King’s College London</p> <p>Deborah Swinglehurst Queen Mary University of London</p> <p>Katharina Hauck Imperial College London</p>
2. Life Course, Psychology & Health	<p>Ted Barker King’s College London</p> <p>Kam Bhui Queen Mary University of London</p> <p>Ruth Taylor Queen Mary University of London</p> <p>Marjo-Riitta Jarvelin Imperial College London</p>
3. Health, Biopolitics & Social Inequality	<p>Carlo Caduff King’s College London</p> <p>Diana Rose King’s College London</p> <p>David McCoy Queen Mary University of London</p>

ECONOMICS & BUSINESS	
4. Economics, Finance & the World Economy	<p>Engelbert Stockhammer King’s College London</p> <p>Alessandra Bonfiglioli Queen Mary University of London</p> <p>Ralf Martin Imperial College London</p>
5. Work, Organisations & Business Management	<p>Chiara Benassi King’s College London</p> <p>Lizzie Barnes Queen Mary University of London</p> <p>Pietro Panzarasa Queen Mary University of London</p>

LANGUAGE, CULTURE & EDUCATION

6. Education, Mind & Society	Meg Maguire King's College London
7. Linguistics, Media & Culture	Ben Rampton King's College London Erez Levon Queen Mary University of London

THE ENVIRONMENT & URBAN LIFE

8. Urbanisation, Social Change & Urban Transformation	Naru Shiode King's College London Regan Koch Queen Mary University of London Aruna Sivakumar Imperial College London
9. Political Ecology, Energy & Environmental Health	Martin Siegert Imperial College London

SECURITY & GOVERNANCE

10. International Development, Conflict & Human Security	Andrés Mejía Acosta King's College London Mats Berdal King's College London Kavita Datta Queen Mary University of London
11. Global Order, Violence & Security Practice	Nikki Palmer King's College London Neve Gordon Queen Mary University of London
12. Strategic, Regional & Security Studies	Preeti Patel King's College London Deeph Chana Imperial College London
13. Politics, Public Policy & Governance	Lucia Pradella King's College London James Scott King's College London Rainbow Murray Queen Mary University of London

PATHWAY 1 Health Practices, Innovation & Implementation (HPII)

Pathway Leads

Dr Peter Schofield

Health Service & Population Research
King's College London
peter.1.schofield@kcl.ac.uk

Dr Deborah Swinglehurst

Centre for Primary Care & Public Health
Queen Mary University of London
d.swinglehurst@qmul.ac.uk

Dr Katharina Hauck

Faculty of Medicine, School of Public Health
Imperial College London
k.hauck@imperial.ac.uk

This thematic pathway is concerned with the application of social science concepts and methods to the development and evaluation of novel strategies to address complex and evolving health needs. Training will focus on: contemporary approaches to knowledge production and evidence synthesis; co-production and co-design; policy translational research; quality improvement; innovation in healthcare technology; methodologies to understand patient, professional and organisational practices; and implementation of novel therapeutic and service configuration interventions. The HPII training pathway is hosted across research groups at King's, Queen Mary and Imperial College which are all located in interdisciplinary departments with an excellent track record of applying social science theories and methods to understanding and defining health needs, and developing and evaluating innovative solutions at diverse levels including patient, population, clinic and policy.

There are five training sub-pathways with linked Masters programmes:

A. PATIENT, PROFESSIONAL & ORGANISATIONAL

PRACTICES explores the social contexts in which health and illness are produced, perceived and managed. **King's College London | MPH/MSc Public Health**

B. DEVELOPMENT & EVALUATION OF COMPLEX

INTERVENTIONS social science approaches to innovating methods of addressing health needs and to testing the effectiveness of these. **King's College London | MPH/MSc Public Health**

C. ECONOMIC MODELLING & EVALUATION health economics applied to innovation and implementation. **King's College London | MSc/MSc Public Health • Imperial College London | MPH Public Health**

D. INNOVATION IN KNOWLEDGE PRODUCTION &

MOBILISATION advances critical thinking about how health knowledge is produced and used, who is engaged in these processes, and with what consequences. **King's College London | MPH/MSc Public Health | MSc Implementation & Improvement • Imperial College London | MPH Public Health: Global Health Stream | MSc Health Policy**

E. GLOBAL HEALTH PRACTICES & POLICIES focuses broadly on transnational health needs, knowledge exchange, solutions and evaluation. **King's College London | MPH/MSc Public Health • Queen Mary University of London | MRes Global Public Health & Policy • Imperial College London | MPH Public Health: Global Health Stream**

PATHWAY 2 Life Course, Psychology & Health (LCPH)

Pathway Leads

Dr Ted Barker

Psychology, Institute of Psychiatry, Psychology & Neuroscience, King's College London

ted.barker@kcl.ac.uk

Professor Kam Bhui

Wolfson Institute of Preventative Medicine
Queen Mary University of London

k.s.bhui@qmul.ac.uk

Dr Ruth Taylor

Centre for Psychiatry
Queen Mary University of London

r.e.taylor@qmul.ac.uk

Professor Marjo-Riitta Jarvelin

School of Public Health
Imperial College London

m.jarvelin@imperial.ac.uk

The Life Course, Psychology, & Health (LCPH) thematic pathway is concerned with the application of social science concepts and methods to the generation of knowledge about the determinants of health and behavioural outcomes that can directly inform health and social policy at a time of rapid change globally (e.g., aging populations, exponential growth of urban and migrant populations, and uneven economic growth and inequality). Training within this pathway will equip the next generation of researchers with the interdisciplinary knowledge and skills to investigate the emergence, development, and population impact of health and behavioural outcomes. Such research will inform strategies to reduce social and health inequalities throughout the life-course.

There are four training sub-pathways with linked Masters programmes:

A. SOCIAL CONTEXTS, CHANGE, & POPULATION HEALTH/ BEHAVIOUR focused on society/area level characteristics (e.g., pollution, inequality, urbanicity, migration, culture, and ethnicity) and the distribution of health/behaviour outcomes in populations; related programmes of research include: international studies of the impact of urbanisation, migration, and developmental trauma on adult health and behavioural outcomes, many using advanced and novel methods and statistical approaches to model, for example, geospatial influences. **King's College London | MSc Applied Mental Health Research | MSc Global Mental Health • Queen Mary University of London | NB. +3 pathway only • Imperial College | MPH Public Health/Global Health Stream**

B. SOCIAL DEVELOPMENT, PSYCHOLOGY, & HEALTH/ BEHAVIOUR focused on socio-environmental factors and health/behaviour over the course of development and on psychological mediators. **King's College London | MSc Applied Mental Health Research • Queen Mary University of London | NB. +3 pathway only**

C. BIO-PSYCHO-SOCIAL INTERACTIONS & HEALTH/ BEHAVIOUR focused on the interplay between the social, the psychological, and the biological in the occurrence and persistence of poor health/behaviour outcomes; related programmes of research include: twin, birth, and other cohort studies of social development, behaviour, and health over the life course. **King's College London | MSc Genes, Environment, & Development**

D. AGEING & HEALTH/BEHAVIOUR focused on social and policy aspects of ageing and health/behaviour, including: ageing policy, health and healthcare; ageing policy & family life; and global ageing; related research programmes include: Inter-disciplinary studies of ageing and society, including the implications of longer working lives for health, understanding the long-term health impacts of social policies using longitudinal survey and registry data, and the demography of care. **King's College London | MSc Gerontology**

PATHWAY 3 Health, Biopolitics & Social Inequality (HBSI)

Pathway Leads

Dr Carlo Caduff

Department of Global Health & Social Medicine
King's College London
carlo.caduff@kcl.ac.uk

Professor Diana Rose

Health Services Research, Institute of Psychiatry,
Psychology & Neuroscience, King's College London
diana.rose@kcl.ac.uk

Professor David McCoy

Centre for Primary Care & Public Health
Queen Mary University of London
d.mccoy@qmul.ac.uk

Students in this thematic pathway will be part of internationally renowned communities for research on the social, geographical and bio-ethical dimensions of health across both King's and Queen Mary. Research within this thematic pathway draws on research groups and expertise, including bioethicists, geographers, medical anthropologists, political scientists and sociologists. A defining feature of the pathway's training will be to provide frameworks seeking social science explanations based on robust evidence with a view to informing ethically defensible social change and/or policy interventions that address harmful health inequalities and further the interests of public health at national, international and global levels in a context of changing biomedical technologies and interventions.

There are four training sub-pathways with linked Masters programmes:

A. AGEING, SOCIAL POLICY & INEQUALITY focuses on understanding the macro-social and political dimensions of ageing societies, how ageing is experienced by communities

and populations, and policy formulation for an ageing world. **King's College London | MSc Gerontology | MSc Ageing & Society | MA Public Policy & Ageing**

B. BIOPOLITICS & GLOBAL HEALTH identifies qualitative and quantitative aspects of global health priorities, the key drivers of global health inequalities, together with the politics, practices and ethics of the global health movement and security. **King's College London | MSc Global Health & Social Justice | MA Global Ethics & Human Values • Queen Mary University of London | MRes Global Public Health & Policy | MRes Global Health Geographies**

C. MEDICINE, HEALTH & PUBLIC POLICY focuses on understanding how changes in biomedicine (such as pharmaceuticals, diagnostics, neuroscience etc.) affect health outcomes and public policy, and how governance and policy priorities shape medicine and health. **King's College London | MSc Medicine, Health & Public Policy | MA Medical Ethics & Law • Queen Mary University of London | MRes Global Health, Law & Governance**

D. SOCIAL DETERMINANTS, HEALTH & JUSTICE analyses the relationships between social conditions, political and economic power, and capabilities for health within evaluative frameworks of ethics and justice. **King's College London | MA Bioethics & Society • Queen Mary University of London | MRes Global Public Health & Policy | MRes Global Health Systems Theory & Policy**

PATHWAY 4 Economics, Finance & The World Economy (EFWE)

Pathway Leads

Professor Engelbert Stockhammer

European & International Studies
King's College London
engelbert.stockhammer@kcl.ac.uk

Dr Ralf Martin

Imperial College Business School
r.martin@imperial.ac.uk

Dr Alessandra Bonfiglioli

School of Economics & Finance
Queen Mary University of London
a.bonfiglioli@qmul.ac.uk

The Economics, Finance & the World Economy pathway builds on the collective strengths of the three LISS DTP partner institutions in the area of Economics and cognate disciplines, including on the regulation of the international economy, and integrates the research expertise and training provision at Queen Mary's School of Economics and Finance (SEF) and School of Business and Management (SBM), Imperial College Business School (ICBS), and King's School of Management & Business (SMB) and Department of Political Economy (DPE). EFWE works at the intersection of economics and political economy to research priority areas of economic performance and sustainable growth.

Training in this thematic pathway is structured around five sub-pathways with linked Masters programmes:

A. GLOBAL MACROECONOMIC STABILITY & RISK provides tools to understand how individual risky decisions on the part of economic actors and institutions aggregate at a systemic level, affecting the stability and economic performance of the macroeconomic system. **Queen Mary University of London | MRes Economics & Econometrics**

- **Imperial College London | Economics pathway within MRes Business**

B. GLOBAL FINANCIAL MARKETS IN THEORY & PRACTICE

the functioning of financial markets is essential for economic activity. This sub-pathway aims to provide students with a thorough understanding, both at a theoretical and at an empirical level, of the way financial markets operate. **King's College London | MSc Banking & Finance** ● **Queen Mary University of London | MRes Finance & Econometrics | MRes International Financial Management** ● **Imperial College London | Economics pathway within MRes Business**

C. ECONOMETRICS OF LARGE DATASETS FOR STATISTICAL & POLICY ANALYSIS

large datasets are increasingly available in a variety of disciplines and provide a new viewpoint for many policy issues. This sub-pathway provides advanced training on statistical and econometric methods for analysing both structured (time series) and unstructured large datasets. **King's College London | MSc Banking & Finance** ● **Queen Mary University of London | MRes Economics & Econometrics** ● **Imperial College London | Economics pathway within MRes Business**

D. POLITICAL ECONOMY, BEHAVIOUR ECONOMICS &

WELFARE focuses on recent developments in the theory of political economy and microeconomics. **King's College London | MA Political Economy** ● **Queen Mary University of London | MRes Economics & Econometrics**

E. GOVERNANCE OF THE WORLD ECONOMY – TRADE,

INVESTMENT & FINANCE provides training on legal, economic and financial interdisciplinary issues related to trade, investment and finance. **Queen Mary University of London | MRes International Financial Management | MRes International Economic Law**

PATHWAY 5 Work, Organisations & Business Management (WOBM)

Pathway Leads

Dr Chiara Benassi

King's Business School
King's College London
chiara.benassi@kcl.ac.uk

Professor Lizzie Barmes

School of Law
Queen Mary University of London
e.m.barmes@qmul.ac.uk

Dr Pietro Panzarasa

School of Business & Management
Queen Mary University of London
p.panzarasa@qmul.ac.uk

WOBM investigates issues of economic performance and sustainable growth, working at the intersection of business innovation, workforce skills and entrepreneurship using interdisciplinary theoretical and methodological resources drawn from sociology, psychology and economics.

There are five sub-pathways with linked Masters programmes:

A. HRM & ORGANISATIONAL BEHAVIOUR investigates the impact of human resource practices and employment relations (including union organisation) on employee well-being and engagement, employee voice, change management, leadership practices and organisational performance. **King's College London | MSc Human Resource Management & Organisational Analysis • Queen Mary University of London | MRes International Human Resource Management • Imperial College | Imperial College Business School MRes**

B. PUBLIC SERVICES MANAGEMENT focusing on especially healthcare and higher education, this sub-pathway

investigates knowledge mobilisation activity, networks in health care, the visible and invisible effects of medical and higher education regulation, and the enactment of management knowledge by general and clinical managers.

King's College London | MSc Public Policy & Management

● **Queen Mary University of London | MRes Public Services**

● **Imperial College | Imperial College Business School MRes MSc Management**

C. BUSINESS & MANAGEMENT IN AN INTERNATIONAL

CONTEXT investigates strategic management, the challenges of internationalisation, particularly entry modes, patterns of international integration and differentiation employed by multinationals and the transfer of human resource practices across countries. **King's College London | MSc International Management** ● **Queen Mary University of London | MRes International Business** ● **Imperial College | Imperial College Business School MRes | MSc International Health Management**

D. EQUALITY, DIVERSITY & INCLUSION AT WORK this sub-pathway is an integral part of the QMUL SBM's nationally and internationally recognised Centre for Research in Equality and Diversity (CRED), focusing on global diversity management and the intersecting nature of inequalities including gender, ethnicity, religion, age and class within economic sectors, professional and low paid work. **Queen Mary University of London | MRes Work & Organisation | MRes International Human Resource Management**

E. TECHNOLOGY, INNOVATION & ENTERPRISE focuses on understanding workplace interactions and technology, the influence of media and digital technologies on social interaction, and the impact of new product development and business ecosystems on innovation, entrepreneurship and technology management. **Queen Mary University of London | MRes Innovation & Enterprise** ● **Imperial College London | MSc Innovation, Entrepreneurship & Management**

PATHWAY 6 Education, Mind & Society (EMS)

Pathway Lead

Professor Meg Maguire

School of Education, Communication & Society
King's College London
meg.maguire@kcl.ac.uk

Students in this pathway will join a community of scholars whose research is designed to both challenge and inform policy and practice in a wide range of education and social policy settings. We work with policymakers, practitioners, activist communities and others, supporting them to critically reflect on, effectively engage with, and actively shape the processes that concern them. Current and recent research partners include: the UK Department for Education, the Scottish Government, local authorities, NHS, the Wellcome Trust, the Health Foundation, the Children's Rights Alliance, Action for ESOL, the US National Science Foundation, national and international science societies, science centres and museums, EU trade union and employer federations, youth workers, social workers, teacher educators, teachers and teacher associations in the UK and overseas.

There are five training sub-pathways with linked Masters programmes:

A. EDUCATION, POLICY & SOCIETY work in this sub-pathway draws on sociology, history, politics and policy analysis to illuminate global and local education policy formations and effects. **King's College London | MA Education, Policy & Society | MA Child Studies | MA International Child Studies**

B. LANGUAGE & LITERACY EDUCATION this sub-pathway is informed by a range of perspectives in applied linguistics, and scholarship on the teaching and learning of literacy, literature and language. **King's College London | MA Applied**

**Linguistics & English Language Teaching | MA Education |
MA Teaching English to Speakers of Other Languages**

C. SCIENCE, TECHNOLOGY, ENGINEERING & MATHEMATICS

EDUCATION drawing on psychology, sociology and interdisciplinary perspectives, this sub-pathway, which is focused on STEM education, addresses questions about curriculum, pedagogy and assessment, aspirations, attitudes and participation, and learning in formal and informal contexts. **King's College London | MA Education | MA Mathematics Education**

D. SCIENCE & HEALTH COMMUNICATION this sub-pathway seeks to improve public understanding of science and risk, and health literacy and public advice, for example, in relation to conceptualisations of diseases, disorders, the body and health, including mental health. This work draws on applied philosophy, linguistic theory, cognitive science and behavioural theory. **NB. +3 pathway only**

E. PROFESSIONAL CHANGE & PROFESSIONAL

DEVELOPMENT configured around the intersection between humanities and social science scholarship and the workplace, this sub-pathway provides opportunities for reflexive and analytical engagement with the purposes of education, personal and professional learning, management and leadership, and organisational cultures and values.

King's College London | MA Education | MA Education Management | MA Education Arts & Cultural Settings

PATHWAY 7 Linguistics, Media & Culture (LMC)

Pathway Leads

Professor Ben Rampton

School of Education, Communication & Society
King's College London
ben.rampton@kcl.ac.uk

Dr Erez Levon

Department of Linguistics
Queen Mary University of London
e.levon@qmul.ac.uk

This training pathway builds on expertise between King's Centre for Language, Discourse & Communication (LDC) and Department of Culture, Media & Creative Industries (CMCI) and Queen Mary's Department of Linguistics (DoL). The pathway integrates a shared concern with the semiotic, discursive and cultural constitution/mediation of personal, institutional, social and political relations and identities. In bringing together Queen Mary's Department of Linguistics with King's Centre for Language, Discourse & Communication, it also provides an unusually coherent cross-paradigmatic training programme in linguistics spanning ethnographic, interactional, quantitative, experimental, cognitive and formal linguistics.

There are three training sub-pathways with linked Masters programmes:

A. LANGUAGE, MIND & SOCIETY focusing on the nature and use of language. **Queen Mary University of London | MRes Linguistics**

B. LANGUAGE, DISCOURSE & CULTURE addressing language and discourse in institutions, media and everyday settings. **King's College London | MA Language & Cultural Diversity**

C. MEDIA & CULTURE studying creative and cultural production in the new & mass media, visual & performing

arts, publishing & film. **King's College London** | **MA Cultural & Creative Industries** | **MA Digital Culture & Society** | **MA Arts & Cultural Management**

PATHWAY 8 Urbanisation, Social Change & Urban Transformation (USCUT)

Pathway Leads

Dr Naru Shiode

Department of Geography
King's College London
naru.shiode@kcl.ac.uk

Dr Regan Koch

School of Geography
Queen Mary University of London
r.koch@qmul.ac.uk

Dr Aruna Sivakumar

Department of Civil & Environmental Engineering
Imperial College London
a.sivakumar@imperial.ac.uk

The pathway will make a distinctive contribution to areas such as the ESRC's strategic priorities on sustainable growth and a vibrant and fair society by exploring ways to improve urban space and urban societies, conceptually, methodologically and substantively. These issues span the past, present and future of cities and urban environments in the global South and North, ranging from development of a walkable, healthy and sustainably-built environment to prevention of crime and disasters by design, and sustaining increasingly diverse communities across gender, age, ethnicity and sexuality. The interdisciplinary nature of this pathway involves collaboration between world-leading researchers in economics, geography, sociology, politics, health, environmental studies and engineering.

There are five training sub-pathways with linked Master programmes:

A. URBAN HEALTH & WELLBEING focuses on understanding the spatial patterns of urban health and inequalities, the consequences for the provision of urban healthcare services and the use of new healthcare technologies for both acute

and chronic care. **King's College London** | **MSc Global Health & Social Justice** ● **Queen Mary University of London** | **MRes Global Health Geographies** ● **Imperial College London** | **MSc Environmental Technology**

B. URBAN SPATIAL POLITICS develops critical assessments of urban citizenship and governance, the management and contestation of urban public space, and urban violence, crime and security. **King's College London** | **MSc Environment, Politics & Globalisation** | **MSc Global Health & Social Justice** | **MSc Sustainable Cities** ● **Queen Mary University of London** | **MRes Geography**

C. DIGITAL INNOVATION IN CITIES focuses on the implications of the explosive growth in new digital data and data-driven innovation and services for urban socio-economic processes, urban structure and urban living. **King's College London** | **MA Big Data in Culture & Society** ● **Imperial College** | **MSc Environmental Technology** | **MSc Transport**

D. HOME, URBAN LIVES & THE BUILT ENVIRONMENT explores the relationship between the processes of urban infrastructure development, the residential property market and housing policy, urban regeneration, gentrification, home and homelessness, alongside the diversity of urban lives and experiences of the city and broader processes of urban demographic change. **King's College London** | **MSc Sustainable Cities** | **MA/MSc Geography** ● **Queen Mary University of London** | **MRes Cities & Cultures**

E. MIGRATION, MOBILITY & FLOW explores both the drivers of and the consequences that follow migration, the flows of commodities and information from, to and within the city and processes of urban mobility. **King's College London** | **MSc Sustainable Cities** | **MA/MSc Geography** ● **Imperial College** | **MSc Transport**

PATHWAY 9 Political Ecology, Energy & Environmental Health (PEEH)

Pathway Lead

Professor Martin Siegert

Grantham Institute for Climate Change
Imperial College London
m.siegert@imperial.ac.uk

Working at the interface of social science with environmental science and engineering, the Political Ecology, Energy & Environmental Health pathway will explore the conceptual possibilities opened up by the juxtapositions of politics with ecology, and environment with health. Managing the risks from climate change and transitioning to a sustainable low-carbon economy require new forms of more integrated environmental science to understand the complex feedbacks between interlinked economic, environmental, and biological systems. The political ecological insight is that the interdisciplinary challenges of living with environmental change are more than technical ones and have social and political dimensions. The field of 'political ecology', spans the disciplines of anthropology, human geography, sociology, and politics and focuses on struggles over environmental resources and the forms of life they depend on and sustain.

There are four training sub-pathways with linked Masters programmes:

A. GLOBAL CHANGE & ENVIRONMENTAL SECURITY

advances understanding of the causes and consequences of global environmental change and its implications for human societies and security.

King's College London | MA/MSc Environment & Development | MSc Climate Change: Environment, Science & Policy | MA Climate Change: History, Culture & Society
● Imperial College | MSc Environmental Technology | MSc Climate Change, Management & Finance

B. ENVIRONMENTAL HAZARDS & HEALTH assesses the risks to human health and well-being from differentiated patterns of vulnerability to environmental hazards like flooding and air pollution. **King's College London | MSc Disasters, Adaptation & Development | MSc Risk Analysis • Imperial College | MSc Environmental Technology | MSc Climate Change, Management & Finance | MSc Epidemiology**

C. ENVIRONMENTAL LAW & GOVERNANCE develops critical conceptual and policy tools for adapting to environmental change and governing natural resources more sustainably. **King's College London | MSc Risk Analysis | MSc Environment, Politics & Globalisation | MSc Water: Science & Governance • Imperial College London | MSc Climate Change, Management & Finance**

D. ENERGY & ENVIRONMENTAL ECONOMICS explores future energy scenarios for a low-carbon economy and their economic, political and behavioural requirements and consequences. **Imperial College London | MSc Environmental Technology | MSc Climate Change, Management & Finance**

PATHWAY 10 International Development, Conflict & Human Security (IDHS)

Pathway Leads

Dr Andrés Mejía Acosta

International Development
King's College London
andres.mejia@kcl.ac.uk

Professor Mats Berdal

Department of War Studies
King's College London
mats.berdal@kcl.ac.uk

Professor Kavita Datta

School of Geography
Queen Mary University of London
k.datta@qmul.ac.uk

The pathway is concerned with the interaction of global forces and local responses in development, health and security, as well as the variety of ways in which international organisations respond to state fragility and protracted insecurity. The pathway provides a unique interdisciplinary approach to the study of international development and conflict. It draws on concepts and insights from a range of disciplines, including international relations, history, area studies, development studies, anthropology, law, geography, and development economics.

Training is delivered along four sub-pathways with linked Masters programmes:

A. DEVELOPMENT, HUMAN SECURITY & MIGRATION

interrogates development futures in the contemporary globaleconomy; the human-development security nexus and the socio-economic, political and cultural dimensions oftransnational migration. **Queen Mary University of London**
| **MRes Global Development Futures** | **MRes International Relations** | **MRes Immigration Law**

B. HEALTH, HUMAN SECURITY & CONFLICT examines the relationship between security and health, including the healthneeds of civilian populations in violent or complex humanitarian emergency and post-conflict situations.

King's College London | MSc Global Health • Queen Mary University of London | MRes Global Health Geographies

C. STATE FRAGILITY, AID & PEACEBUILDING explores the sources and nature of state fragility, and assesses the ways inwhich donors and international organisations have responded to the challenges of state- and peacebuilding bothduring and in the aftermath of armed conflict.

King's College London | MA Conflict, Security & Development | MA International Conflict Studies

D. DEVELOPMENT IN MIDDLE INCOME EMERGING ECONOMIES examines how economies and societies move from lower-value added, less durable and less inclusive modes of economic and political organization to higher value-added,durable, and broadly inclusive modes, with a particular focus on Latin America and East/Southeast Asia.

King's College London | MSc Emerging Economies & International Development | MSc Political Economy & Emerging Markets | MSc Emerging Economies & Inclusive Development | MRes Contemporary India | MSc China & Globalisation | MSc Brazil in Global Perspective

PATHWAY 11 Global Order, Violence & Security (GOVS)

Pathway Leads

Dr Nikki Palmer

The Dickson Poon School of Law
King's College London
nicola.palmer@kcl.ac.uk

Professor Neve Gordon

School of Law
Queen Mary University of London
neve.gordon@qmul.ac.uk

The Global Order, Violence & Security thematic pathway incorporates expertise across King's and Queen Mary and its training and research is concerned with theorising the global order, understanding the political and structural status of violence in and outside that order, and the transformations of security discourses and practices underpinning it. Using interdisciplinary theoretical and methodological resources drawn from International Relations (IR), War Studies, State Crime scholarship and International Law, the training combines conventional and critical perspectives on the post-Westphalian international order, its governance and subversion through the rise of various state and non-state forms of violent conflict. There is a particular focus on: the changing processes, structures and institutions of governance; the political, economic and sociological parameters of political violence and the resistance to it posed by subversive discourses, actors and practices; the transformations of security practices; and the ethics and justice of global order.

The four sub-pathways constituting this Pathway and their linked Masters programmes are:

A. THEORISING GLOBAL ORDER focuses on the development and application of international political and legal theory to explaining and assessing the shifting character of the

global order across a variety of domains. These include: conceptual, normative and explanatory debates in macro-level theories of International Relations and the history of international political thought. **King's College London | MA International Relations | MA International Conflict Studies** ● **Queen Mary University of London | MRes International Relations**

B. INTERNATIONAL LAW & WAR CRIMES focuses on the conceptual, theoretical and methodological understanding of the role of law in international relations and the capacity of legal instruments to regulate war, organised violence and conflict. **King's College London | MA International Peace & Security | MA Global Ethics & Human Values | MA International Relations** ● **Queen Mary University of London MRes Public International Law | MRes Human Rights Law | MRes Criminal Justice**

C. VIOLENCE & GLOBAL ORDER provides interdisciplinary conceptual, theoretical and methodological training in understanding the causes and dynamics of political violence, and the relationship between violence (state and non-state), politics, and law. **King's College London | MA International Relations | MA International Conflict Studies | MA Conflict, Security & Development** ● **Queen Mary University of London MRes International Relations | MRes Public International Law | MRes Human Rights Law | MRes Criminal Justice**

D. INTERNATIONAL POLITICAL SOCIOLOGY OF SECURITY provides interdisciplinary training in socio-political and institutional practices of securitisation across different domains and their social, political, and legal implications. **King's College London | MA International Conflict Studies | MA International Relations**

PATHWAY 12 Strategic, Regional, & Security Studies (SRSS)

Pathway Leads

Dr Preeti Patel

Department of War Studies
King's College London
preeti.patel@kcl.ac.uk

Dr Deeph Chana

Institute for Security Science & Technology
Imperial College London
d.chana@imperial.ac.uk

The Strategic, Regional, & Security thematic pathways is led by King's School of Security Studies in partnership with the Institute of Middle East Studies, and the King's School of Global Affairs (especially the India Institute, China Institute and Russia Institute), together with Imperial College's Institute for Security Science & Technology and Security Institute. The need has never been greater to understand the changing global security landscape, with the rise of Daesh, sophisticated terrorist attacks in Europe, the resurgence of Russia, Iranian nuclear ambitions, the increasing threat of cyber-attacks, and unprecedented population flows into the EU. The need to develop the UK social science base in security is reflected in the RCUK Partnership on Conflict, Crime & Security (PaCCS), the recent PaCCS on Conflict Research, and the creation of an ESRC-funded 'National Centre for Research & Evidence on Security Threats.'

Training is delivered along five sub-pathways with linked Masters programmes:

A. WAR STUDIES investigates strategic thought and practice and the history of warfare to advance understanding of the origins, dynamics and transformations of war. **King's College London | MA War Studies | MA History of War | MA International Conflict Studies | MA International Peace & Security | MA Conflict, Security & Development**

B. INTELLIGENCE & CYBER-SECURITY investigates the role of intelligence in international relations and in contexts of conflict and war. It enables interdisciplinary exploration of the new era of mass surveillance and cybersecurity.

King's College London | MA Intelligence & International Security

C. REGIONAL SECURITY focuses on international relations and area studies in the investigations of the origins and dynamics of regional conflicts, specifically in South Asia, the Middle East, and Africa. **King's College London | MA Conflict Resolution in Divided Societies | MA Middle Eastern Studies | MA South Asia & Global Security | MA Conflict, Security & Development | MRes Contemporary India | MSc Russia in Global Systems | MSc China & Globalisation**

D. SCIENCE & SECURITY explores the interface of science, technology and security policy. Focusing on weapons proliferation and the broader security agenda, the pathway provides training in policy analysis as this relates to technological innovation and proliferation. **King's College London | MA Science & Security**

E. TERRORISM & SECURITY provides an interdisciplinary approach in the study of the dynamics and socio-political effects of terrorism and policies relating to counter-terrorism. **King's College London | MA Terrorism, Security & Society**

PATHWAY 13 Politics, Public Policy & Governance (PPPG)

Pathway Leads

Dr Lucia Pradella

Department of European & International Studies
King's College London
lucia.pradella@kcl.ac.uk

Dr James Scott

Department of Political Economy
King's College London
james.m.scott@kcl.ac.uk

Professor Rainbow Murray

School of Politics and International Relations
Queen Mary University of London
r.r.murray@qmul.ac.uk

The Politics, Public Policy & Governance thematic pathway's research training is focused on the acquisition of the knowledge, skills and techniques required for the study of the institutions and practices of government and politics, with a focus on the governance of the UK, Europe and international institutions, and on political, legal and social theory. Researchers in this area work on: the making and implementing of public policy; conceptual and normative questions in political, legal and social theory; political economy and international political economy; rights, constitutions, democracy and party politics; comparative politics; and public management. The training pathway draws on expertise from across the disciplines of politics, history, political economy, law, and business and management studies, and on input from professionals and practitioners. The Policy Institute at King's, Queen Mary's Mile End Institute (MEI) and the Centre for Government & Leadership (CGL) all institutionalise ongoing formal relationships with politicians and policy practitioners.

There are four training sub-pathways with linked Masters programmes:

A. POLITICAL, LEGAL & SOCIAL THEORY research in this sub-pathway encompasses the study of ideology, the history of political thought, normative and positive political theory, conceptual and theoretical understandings of, for example, rights, democracy, liberty, and political authority, and theoretical perspectives on the international political economy. **King's College London | MA Political Economy MA International Political Economy | MA Global Ethics & Human Values • Queen Mary University of London | MRes Public Policy**

B. POLITICAL INSTITUTIONS & BEHAVIOUR research in this sub-pathway is focused on British, EU and comparative politics, specifically examining constitutional and parliamentary politics, elections and party politics, gender and politics, and relationships between government and external stakeholders and interests. **King's College London MA Political Economy | MA European Political Economy MA Public Policy • Queen Mary University of London | MRes Public Policy | MRes Public Services**

C. GOVERNANCE, PUBLIC POLICY & REGULATION research in this sub-pathway is focused on the study of national and international governance, including the governance of financial services, financial and labour markets, and issue areas such as biological innovation, privacy, political violence and electoral corruption. **King's College London | MA Public Policy | MSc Public Policy & Management | MA European Political Economy • Queen Mary University of London | MRes Public Policy | MRes International Business & Politics | MRes Public Services**

D. EUROPEAN GOVERNANCE research in this sub-pathway is focused on EU policy and governance and draws on the concentration of EU research at King's and Queen Mary. **King's College London | MA European Studies | MA European Political Economy • Queen Mary University of London | MRes Public Policy | MRes International Relations MRes International Business & Politics**



LISS DTP Studentships

The **London Interdisciplinary Social Science Doctoral Training Partnership (LISS DTP)** will award over 50 ESRC-funded postgraduate research studentships each year to support research and training in the social sciences at our three partner institutions – **King’s College London, Queen Mary University of London and Imperial College**. These studentships include payment of tuition fees and a stipend/maintenance grant for the duration of the award. There are also regular opportunities for awardees to apply for additional funding for overseas fieldwork, training, conferences, difficult language training and overseas institutional visits, among other things.

Studentships are available for three or four years full-time (or pro-rata as part-time studentships), either as:

- a one-year Masters followed by a PhD ('1+3'); or
- a three-year PhD ('+3'); or
- as part of a collaborative project with a non-academic partner established by an academic at one of our partner institutions (a CASE studentship)
- as part of a cross-disciplinary project supported by two UK Research Councils

Options thus exist for students holding a BA/BSc with strong academic potential to be funded by LISS DTP through a 1+3 format award.

Collaborative (CASE) studentships are awarded via a two-step process. Initially, academics from the three partner institutions are invited to submit proposals for collaborative research projects with a non-academic partner. Successful projects will then bring a chosen student on board to undertake the project (subject to LISS DTP approval) or be assisted with recruitment of an appropriate candidate. CASE studentships can be 1+3 or +3 in format. More information and a timeline for the CASE studentship competition is available here – www.liss-dtp.ac.uk/studentships/collaborative-case-studentships

Studentships are also awarded through an open competition, where research proposal ideas are generated by students with assistance from prospective supervisors. Both 1+3 and +3 formats are available as appropriate for the individual student’s existing training and needs.

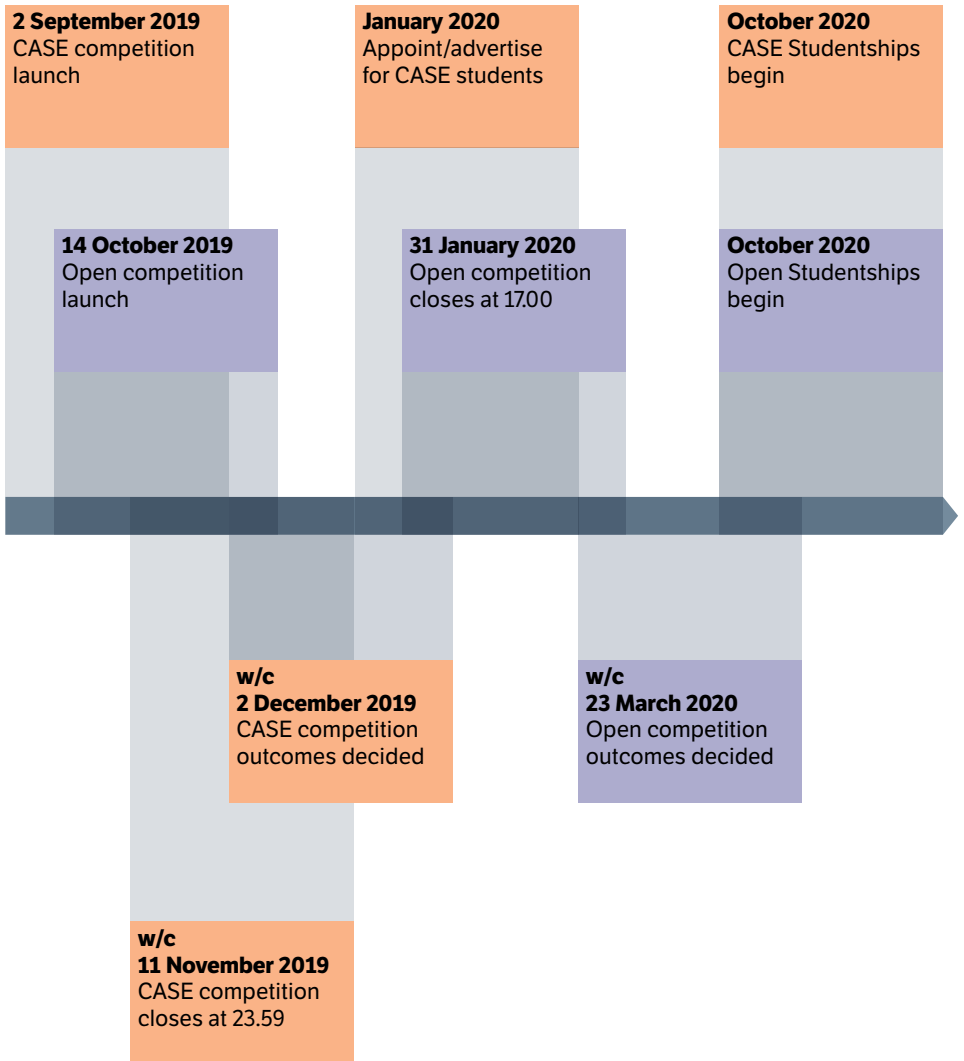
More information on the LISS DTP Open Studentship Competition is available here – www.liss-dtp.ac.uk/studentships

Cross-Council studentship projects are created by academics working across Research Council disciplinary boundaries. To propose a possible cross-Council studentship, please contact liss-dtp@kcl.ac.uk

To find out more about LISS DTP's studentships, check whether you meet eligibility criteria and your proposed research is within the ESRC's remit, view submission deadlines and timelines, and to complete applications for our various studentships please see the following webpage: www.liss-dtp.ac.uk/studentships

A diagram follows to illustrate our LISS DTP studentship timeline each year.

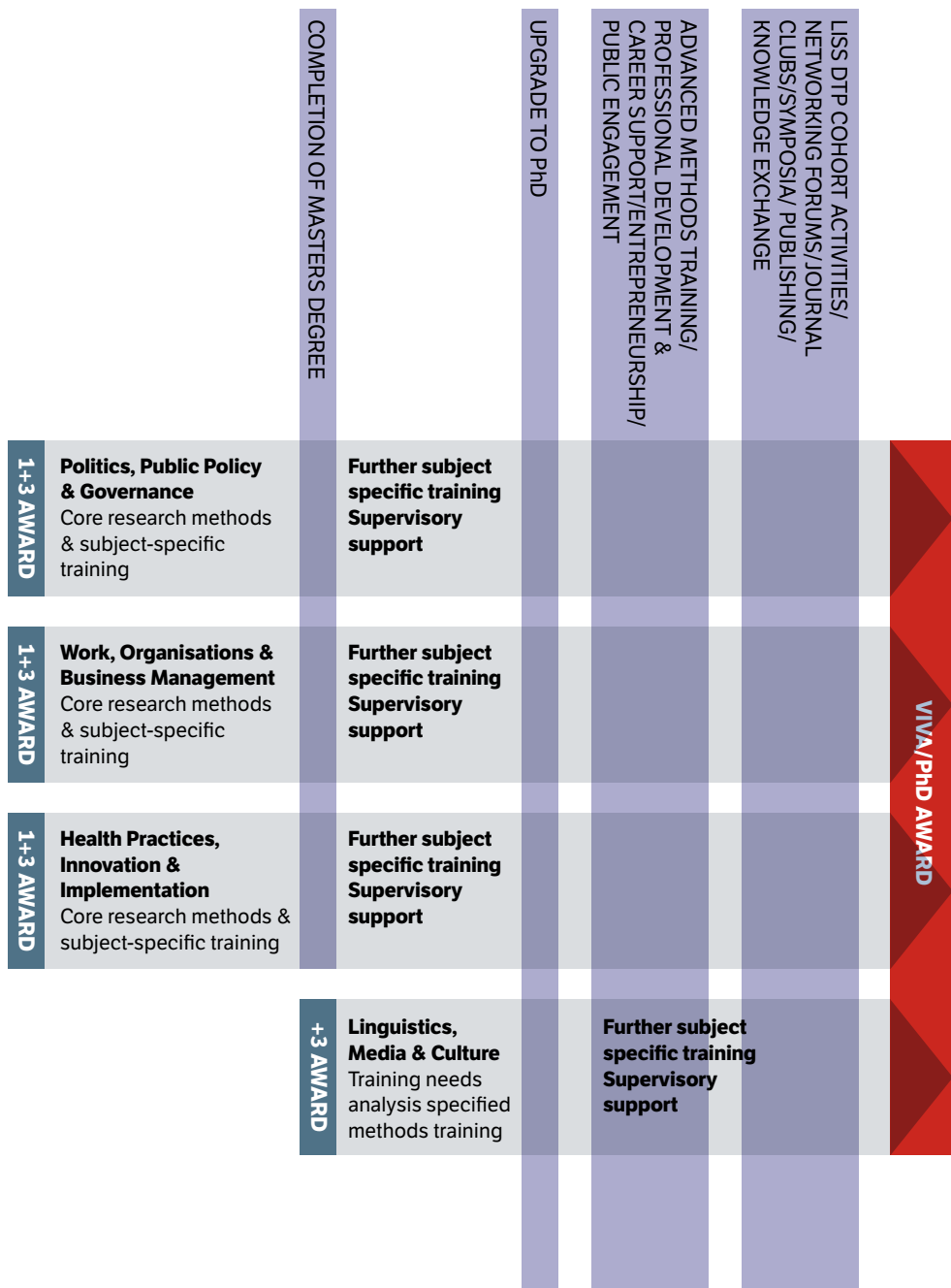
LISS DTP timeline



The PhD Journey

The postgraduate journey can start either with a Masters degree (MA, MSc, MRes degree for example) or with direct entry into a PhD programme (as an MPhil, first year doctoral student). During your Masters degree, you will undertake training in core subject-specific approaches and in core social science research methodologies, such as research design, reviewing the literature, social theory & epistemology, qualitative and quantitative methodologies. This training will provide you with a broad knowledge base across commonly-used social science methodologies but also help you to situate your research interests and project within key disciplinary or interdisciplinary sites of research.

During your first year of the PhD (MPhil year) you may also engage in 'top-up' training in some of these core approaches and methodologies to prepare you for further research. The first year of your PhD will also provide time to begin advanced methods training in methods and approaches which will be crucial for your doctoral research project and to work with your supervisors to solidify your project proposal in preparation for your upgrade process (which typically happens 9-18 months after you commence doctoral studies). Cohort level and professional skills training are also available during this year. After a successful upgrade, you will continue to intensify work on your specific doctoral project. Your advanced methods training and professional and career development support will be combined with cohort training activities, in areas such as knowledge exchange and co-generation with academic and non-academic partners, public engagement, and data collection, analysis and management, supported by your supervisors and cohort colleagues. As you near the completion and submission of your dissertation, training activities and other partnership and institutional resources such as individualised career counselling are available to help you plan your future beyond the doctorate. The diagram that follows is an indicative illustration of this process.



Training Programme

In the following pages you will find a list of training courses available to PhD students across the LISS DTP partnership who are using social science methodologies, whether or not they are funded by a LISS DTP studentship. The programme is organised into core and advanced courses.

Core training introduces first year PhD students to the basics of undertaking doctoral research. The individual courses within this training category are collectively called the Methods in the Social Sciences programme and are as follows:

- LISS001 Research Design & Project Evaluation
- LISS002 Reviewing the Literature
- LISS003 Philosophy of the Social Sciences
- LISS004 Introduction to Qualitative Research
- LISS005 Introduction to Quantitative Research

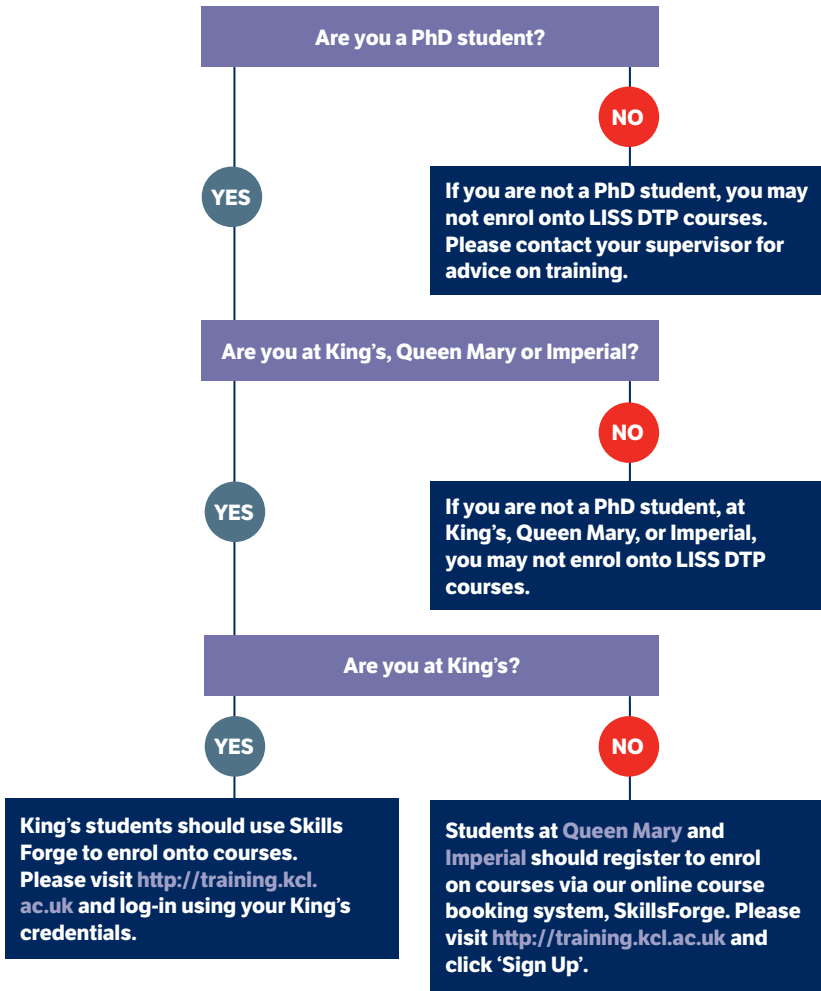
You can take these courses as individual options or sit the entire Methods in the Social Sciences programme; these 5 courses will be spread throughout each academic year. Further information on each core training course starts on page 54. Detailed outlines will be available on the LISS DTP website – www.liss-dtp.ac.uk/our-training-programme

The advanced methods training programme draws on the varied expertise of staff at all three partner institutions to provide an extensive programme of short courses, seminars, workshops and reading groups. LISS DTP Pathway groups (see page 16) will play a key role in shaping the advanced methods training options that run each year. More detailed outlines and information will also be available on the LISS DTP website. Brief summaries of some of the advanced methods courses we plan to offer this academic year can be seen in the following pages.

Advanced methods training provision will fall within five broad (and sometimes overlapping) platforms:

- Social Theory & Epistemology (STE)
- Qualitative Research (QuL)
- Quantitative Research (QuT)
- Digital & Archival Research Methods (DAR)
- Knowledge Exchange & Co-generation (KEC)

How to book onto a LISS DTP course



CORE TRAINING & THE METHODS IN SOCIAL SCIENCES PROGRAMME

It is recommended that all first year doctoral students affiliated with LISS DTP undertake any core research methods training listed below that they have not covered during their Masters degrees.

RESEARCH DESIGN & PROJECT EVALUATION

SKILLS FORGE REFERENCE: LISS001

Course convener: TBC

Type of event: 1 lecture, 1 workshop

Beginning 3 October 2019

Term: Autumn

This core course is designed for first year doctoral students in the social sciences to improve your understanding of research design and support you in applying the associated knowledge and skills to the development of your PhD. The course is delivered in two sessions: a lecture and a Pathway level workshop. It is strongly recommended, and mandatory for LISS DTP-funded students, that you combine this course with training provided by your university in: research ethics, data management and protection, copyright and open access publishing. This course is designed to:

- Enhance your understanding of the general principles of research design, peer review and research governance.
- Support you in identifying answerable research questions.

REVIEWING THE LITERATURE

SKILLS FORGE REFERENCE: LISS002

Course convener: TBC

Type of event: 1 lecture, 1 workshop

Beginning 10 October 2019

Term: Autumn

This course is designed to help you understand the kind of literature review that you will be expected to write for a doctorate in the social sciences in your area of study, as well as the literature review's contribution to the originality of your research.

It is strongly recommended, and mandatory for LISS DTP-funded students, that you combine this course with training provided by your university to: familiarise yourself with the library resources available, learn to use a bibliographic software, such as RefWorks or Endnote, and improve your searching skills on databases and online. See below for institutional links to this kind of training:

At King's College London

www.kcl.ac.uk/library/researchsupport/index.aspx

At Queen Mary University of London

www.library.qmul.ac.uk/research

At Imperial College London

www.imperial.ac.uk/admin-services/library/research-support

PHILOSOPHY OF THE SOCIAL SCIENCES

SKILLS FORGE REFERENCE: LISS003

Course convener: TBC

Type of event: 6 lectures

Beginning 17 October 2019

Term: Autumn

This course is designed to introduce you to key theoretical debates about the nature, purpose and practice of the social sciences. Through lectures, you will consider a range of philosophical approaches to understanding social scientific knowledge – from empiricism, to hermeneutics, Marxism and poststructuralism – and discuss the relationship between theoretical debates in particular disciplines and those within the wider social sciences. At the end of the course, you should be able to understand and evaluate a range of philosophical approaches to social science, recognise interaction between your own discipline and wider currents in social theory and appreciate the significance of epistemological reflection for the practice of research.

Topics covered will include:

- Introduction: what is Social Science?
- Positivist Social Science
- Hermeneutics & Interpretive Social Science: Understanding Narrative & Interpretation
- Marxism, Feminism & Critical Social Science
- Critical Realism: Beyond Positivism & Interpretation?
- Poststructuralism & the Cultural Turn in Social Science

INTRODUCTION TO QUALITATIVE RESEARCH

SKILLS FORGE REFERENCE: LISS004

Course convener: TBD

Type of event: 8 sessions consisting of lectures and group discussion

Beginning January 2020

Term: Spring

This course provides an introduction to some key principles and procedures in qualitative research methodology, including: participant observation, interview techniques, ethnography and discourse data, starting with an overview, moving through data collection and analysis, to a consideration of your own research. It engages with some canonical qualitative research texts. Priority on this course will be given to students who have been awarded LISS DTP studentships.

INTRODUCTION TO QUANTITATIVE RESEARCH

SKILLS FORGE REFERENCE: LISS005

Course convener: TBD

Type of event: 9 lectures and 9 group tutorials

Beginning May 2020

Term: Summer

This course provides a foundation in quantitative data analysis, covering descriptive statistics and inferential statistics, non-parametric statistics, applied regression analysis and statistical communication. Priority on this course will be given to students who have been awarded LISS DTP studentships.

SUMMARY OF INDICATIVE ADVANCED METHODS COURSES

TERM	CODE	TYPE	TITLE	PAGE
All year	LISS235	QuL	Ethnography Book Club	63
Autumn	LISS032	KEC	Design & Evaluation of Complex Interventions	57
Autumn	LISS228	QuL	Voices of Experience: Doctoral Experiences in Developing & Transitional Countries	63
Autumn	LISS238	QuT	Social Network Analysis	66
Autumn	LISS326	DAR	Researching Digital Texts with Corpus Software	58
Autumn	LISS336	STE	Security, Ethnography & Discourse	60
Autumn	LISS342	QuL	How to make a film with no idea about film-making	64
Autumn	LISS346	DAR	Advanced Text Processing	58
Spring	LISS211	STE	Understanding History: How the Past is Constructed	59
Spring	LISS218	QuL	Comparative Case Studies	62
Spring	LISS236	QuT	Geographic Information Systems 1: Data	65
Spring	LISS237	QuT	Geographic Information Systems: Raster & Vector Analyses	66
Spring	LISS250	QuT	Intermediate Quantitative Analysis with SPSS & PROCESS: Mediation & Moderation	70
Spring	LISS340	STE	Performative Methods	61
Spring	LISS343	STE	The Colonial Question in Theory & Method	61
Spring	LISS344	QuL	Designing & Using Focus Groups	65
Summer	LISS213	STE	Feminist Methods	59
Summer	LISS221	QuL	Elite Interviews	62
Summer	LISS227	QuL	Ethnography Workshop	62
Summer	LISS242	QuT	Data Management & Manipulation	67
Summer	LISS244	QuT	Panel Data	67
Summer	LISS245	QuT	Structural Equation Modelling using Mplus	68
Summer	LISS247	QuT	Time Series Econometrics & Dynamic Panels	68
Summer	LISS248	QuT	Regression Using Categorical Dependent Variables	69
Summer	LISS249	QuT	Econometric Methods for Causal Inference	69
Summer	LISS309	QuL	Researching Vulnerable Populations	64
Summer	LISS323	KEC	Producing Research Podcasts	57
Summer	LISS328	STE	Ethics of Clinical Research	60

KEY DAR Digital & Archival Research Methods | **KEC** Knowledge Exchange & Co-generation
QuL Qualitative Research | **QuT** Quantitative Research | **STE** Social Theory & Epistemology

ADVANCED METHODS TRAINING PROGRAMME

The advanced methods programme is made up of short courses, workshops, seminars and reading groups led by researchers from across our three partner institutions and external experts. It's organised into the following platforms:

Knowledge Exchange & Co-generation, Digital & Archival Research Methods, Social Theory & Epistemology, Advanced Qualitative Methods and Advanced Quantitative Methods. We are constantly developing new courses, so please check our Training Programme webpage (<https://liss-dtp.ac.uk/our-training-programme>) regularly for new additions.

KNOWLEDGE EXCHANGE & CO-GENERATION

DESIGN & EVALUATION OF COMPLEX INTERVENTIONS

SKILLS FORGE REFERENCE: LISS032

Course convener: Professor Jane Sandall

Department: King's Division of Women's Health

Type of event: 1 day workshop

Term: Autumn

In health and social policy, it has become increasingly important to use 'evidence-based' criteria to decide what kind of policies and programmes work, how, for whom, in what circumstances, and at what cost. It has also become important to know how interventions are implemented. This workshop will enable students to develop their knowledge and understanding of the development and use of trials and systematic reviews of complex interventions that inform health and social policy. The aim is to equip participants to understand, critique and make effective use of such evidence. Teaching will consist of lecture, group discussion and practical

examples drawn from health and social research. This course incorporates:

- 1 The role of evidence of effectiveness in informing health and social policy
- 2 Why we need different types of systematic reviews
- 3 Complex intervention research design in health and social sciences (hybrid-effectiveness implementation designs)
- 4 Practical examples in high and low-income countries.

PRODUCING RESEARCH PODCASTS

SKILLS FORGE REFERENCE: LISS323

Course convener: Antoon Cox

Department: King's School of Education, Communication & Society

Type of event: 3 x 3 hour course

Term: Summer

This module offers an introduction to the production of research podcasts for the purposes of dissemination within both the academic community and the public at large. In this module, we will study how to turn academic research projects and papers into audio podcasts. We will focus on what it takes to make

good podcasts (both content-wise and from a technical perspective) and how to turn your research into a radio documentary or an academic interview. You will also learn how to collect and edit soundbites, interviews and contextual sounds that describe your research. Once the podcasts have been produced, we will also go through the opportunities to market them online to the wider public.

DIGITAL & ARCHIVAL RESEARCH METHODS

RESEARCHING DIGITAL TEXTS WITH CORPUS SOFTWARE

SKILLS FORGE REFERENCE: LISS326

Course convener: Dr Clyde Ancarno
Department: King's School of Education, Communication & Society
Type of event: 5 x 2 hour course
Term: Autumn

This skills-based course will introduce you to corpus software which you can use to analyse collections of digital texts (e.g. using traditional corpora but also corpora of answers to open-ended questions in a questionnaire, of legal texts relevant to your research, and of transcripts of news broadcast). We will illustrate how corpus methods can be used to support researchers in the social sciences and humanities, helping them to enhance their research in a range of ways. You will, for example, become aware of patterns of language use in your textual data which may otherwise remain invisible and also be able to reduce researcher bias in your analysis of language use. By the end of the

course, you will know what to consider when collecting and preparing textual data for analysis with corpus software and you will be able to produce a range of corpus outputs – e.g. lists of words which tend to co-occur together (collocate lists) – to support your analyses.

ADVANCED TEXT PROCESSING

SKILLS FORGE REFERENCE: LISS346

Course convener: Anda Drasovean
Department: King's School of Education, Communication & Society
Type of event: 5 hour course
Term: Autumn

This half-day course is aimed at researchers in the social sciences and humanities who are working with electronic texts and who might require knowledge of advanced text processing techniques. For instance, they might need to automatically remove all empty lines in a large text file or a batch of text files. The course will introduce participants to regular expressions (regex), a set of conventional symbols that can be combined to define patterns. These patterns can then be used to manipulate character strings/text, and to perform complex searches, additions, and substitutions. A typical application of regular expressions might involve, for example, standardising dates in different formats (e.g. changing all dates formatted as 'mm-dd-yyyy' or 'mm/dd/yy' to 'dd.mm.yy'), deleting unwanted whitespace characters, or finding and replacing the alternative spellings of a word with a standard one. After learning the basics of

regular expressions, we will move on to manipulating multiple text files with the help of regex and an advanced text editor (e.g. Notepad++). This will be a hands-on session with a Q&A at the end to address specific questions you may have.

SOCIAL THEORY & EPISTEMOLOGY

UNDERSTANDING HISTORY: HOW THE PAST IS CONSTRUCTED

SKILLS FORGE REFERENCE: LISS211

Course convener: Dr Alan James
Department: King's War Studies
Type of event: x 2 hour course
Term: Spring

This is a short course on how our understanding of the past is constructed. It is taught in two, interactive sessions covering the nature of the historian's craft and the principal methodological and historiographical trends of the last two centuries. The aim, however, is to challenge rather than to inform. Students are encouraged to consider the limits of historical knowledge and to examine critically their own, often unspoken, assumptions about the study of the past.

PART ONE

HISTORY: PAST, PRESENT, AND FUTURE

Covering the evolution of the academic discipline of history, this session will assess the current state of historical research. The purpose will be to expose the lack of theoretical grounding of much work in the field and the limiting, instinctive reliance

by many historians on hindsight and linear models of change.

PART TWO

THE HISTORICAL RECORD: THE NATURE OF HISTORICAL EVIDENCE

Historians typically value, above all else, the location, effective handling, and presentation of evidence in the construction of an argument. Yet the nature of historical evidence itself is not frequently enough considered. This session explores the inherent limitations of historical evidence and the hopeless pursuit of 'historical truth'.

FEMINIST METHODS

SKILLS FORGE REFERENCE: LISS213

Course conveners: various
Department: multi-university
Type of event: 4 x 3 hour course
Term: Summer

Feminism has made a significant contribution to the practice of research across the social sciences, highlighting issues of power, reflexivity, secrecy and silence. This course will explore questions of methodology and epistemology discussing the challenges and dilemmas raised by feminist researchers to thinking about a variety of different aspects of the research process. The workshop will feature a combination of lectures, talks and student discussion. Example session topics from previous years have included: representing others and ourselves, power in the research process, living and telling feminist stories and absence, silence and disarticulation.

ETHICS OF CLINICAL RESEARCH

SKILLS FORGE REFERENCE: LISS328

Course convener: Dr Silvia Camporesi

Department: King's Global Health & Social Medicine

Type of event: 5 day course

Term: Summer

This module aims to provide an introduction to the foundations of clinical research ethics. The first half of the course introduces students to fundamental concepts and key frameworks used in research ethics. The second half of the course puts these concepts and frameworks to work by discussing current topics in clinical research ethics, such as genetic research and bio-banking or international research. The closing session invites students to reflect on the extent to which clinical research ethics is “exceptional”, compared to how we reason about ethics in other areas of life, as some commentators have claimed.

SECURITY, ETHNOGRAPHY & DISCOURSE

SKILLS FORGE REFERENCE: LISS336

Course conveners: Dr Constadina Charalambous, Louise Eley, Dr Emma Mc Cluskey, Professor Ben Rampton

Department: King's School of Education, Communication & Society

Type of event: 4 x 2 hour course

Term: Autumn

In a post 9-11 world, issues of unease and (in)security permeate people's everyday lives ever more deeply. Schools, nurseries,

hospitals and community centres are becoming sites of (in)security, while security apparatuses are becoming ever more diffuse and banal. For research, these processes necessarily draw the study of conflict and security closer to fields like sociolinguistics, anthropology and education, which focus on everyday practice in institutions and communities. At King's, we are exploring these links at LIEP, the Language (In)security & Everyday Practice Lab, a collaboration between researchers in Critical Security Studies and Sociolinguistics.

This short course builds on this discussion. It connects the robust perspectives on language and situated practice with the study of International Relations and Security Studies by introducing key methods and approaches from Linguistic Ethnography. It is taught in four interactive sessions (2hrs each) which mix empirical data with articles from IR and Sociolinguistics.

The course is designed both for IR students interested in the everyday dimensions and communicative dynamics of phenomena like surveillance, migration, borders and states of exception, and for language researchers committed to understanding how contemporary communicative practice is increasingly affected by security concerns.

PERFORMATIVE METHODS

SKILLS FORGE REFERENCE: LISS340

Course convener: Professor Engin Isin

Department: QMUL Politics & International Relations

Type of event: 1 day course

Term: Spring

This workshop is a critical exploration of how methods function in social and political inquiry. It will be organised as a morning (10-12) and afternoon (13-16) workshop. The morning workshop will focus on theories of performativity and speech acts since J.L. Austin including John Searle, Jacques Derrida, Eve Sedgwick, Shoshana Felman, and Judith Butler. The morning workshop will require reading 3-4 articles that will be provided in advance. The afternoon workshop will focus on empirical examples of how methods function in studying social and political worlds by naming the very worlds that they study. This will be an interactive workshop with students who have already identified certain objects for their study and methods with which to study them. The afternoon workshop will require students doing an exercise to identify their objects and methods of inquiry.

THE COLONIAL QUESTION IN THEORY & METHOD

SKILLS FORGE REFERENCE: LISS343

Course convener: Dr Lisa Tilley

Department: QMUL Politics & International Relations

Type of event: 4 x 2 hour course

Term: Spring

This course presents an expansive introduction to a range of foundational approaches to 'the colonial question' in theory and practice. The sessions will guide doctoral scholars through the landscape of thought from anticolonial critique, through the varied twists and turns in postcolonial theory, to the more recent developments around decolonial thought. Beyond this, we will work towards a practical and applicable understanding of post- and de-colonial methods which will be useful for scholars working with a range of critical theories and empirical approaches in their research. Across the four sessions, the course will draw on textual, audio, and film sources, and will engage interactive and experiential learning techniques to bring the material alive.

ADVANCED QUALITATIVE METHODS

COMPARATIVE CASE STUDIES

SKILLS FORGE REFERENCE: LISS218

Course convener: Dr Louise Tillin

Department: King's India Institute

Type of event: 1 half-day course

Term: Spring

This session will look at the logic and design of comparative research in the social sciences using small numbers of cases. We will consider debates about the advantages and disadvantages of qualitative small-n research, and then go on to discuss strategies for case selection and comparison in such studies including subnational comparisons, and configurative case study research. This session is geared towards social scientists – and specifically those whose units of comparison are things such as countries, cities, provinces rather than individuals (those coming from a health background may want to check with the convener that the session will be of relevance to them).

ELITE INTERVIEWS

SKILLS FORGE REFERENCE: LISS221

Course convener: Dr James Scott

Department: King's Political Economy

Type of event: 1 x 2 hour course

Term: Summer

This course aims to provide students with the necessary knowledge and expertise in the methodology and practice of elite

interviewing and the use and analysis of interview data. Drawing on the extensive experience of the co-convenors, it will cover the following:

- Using interviews as a source of data
- The ethics of interviewing
- How to select interview participants
- How to arrange an interview
- How to prepare for an interview
- How to get the most out of an interview
- What can go wrong in an interview
- For and against recording an interview
- Analysing interview data
- Incorporating interview data into your research
- Reliability and validity of interview data

ETHNOGRAPHY WORKSHOP

SKILLS FORGE REFERENCE: LISS227

Course convener: Dr Charlotte Kuhlbrandt

Department: King's School of Population Health & Environmental Sciences

Type of event: 2 x 2 hour session workshop

Term: Summer

This is a practical workshop, designed to give students the opportunity to gain some experience of conducting ethnographic research prior to their fieldwork. During each of the sessions we will think about practical, ethical and political questions that ethnographers are confronted with. Students will have time to discuss their own research plans. Between sessions, they will engage in a limited period of participant observation in a place of their choice and try their hand at producing a short ethnographic text. By the end of the workshop, students will have had the chance to experience some of the rewards

and challenges of conducting participant observation and ethnographic writing in a friendly environment. These workshops will also allow students to meet other interested, like-minded colleagues from across the DTP.

VOICES OF EXPERIENCE: DOCTORAL EXPERIENCES IN DEVELOPING & TRANSITIONAL COUNTRIES

SKILLS FORGE REFERENCE: LISS228

Course conveners: various

Department: cross-university + experts

Type of event: 1 day workshop

Term: Autumn

This full day workshop provides experience based training on conducting doctoral and early career research fieldwork in developing and transitional countries. The course will provide researchers with ideas and tools for how to go about preparing for conducting fieldwork based research. Topics covered with include working across languages and cultures; challenges in interviewing; research ethics in the field; impactful fieldwork, fieldwork top tips from seasoned fieldwork researchers; working in risky environments and psychological preparation for encountering an unexpected traumatic event. The workshop will offer a forum for discussion and resourcing participants to prepare themselves and consider personal research and coping strategies for conducting their fieldwork based research. We will also introduce participants to ways in which to plan and conduct impactful research

in the field. Each researcher will leave the workshop with a first draft of a personal “Impact in the field” plan.

ETHNOGRAPHY BOOK CLUB

SKILLS FORGE REFERENCE: LISS235

Course conveners: Professor Christopher McKeiv, Rachel Faulkner-Gurstein & Emma Goettke

Department: Primary Care

Type of event: Reading group (5 session per academic year)

Term: all year

Ethnographic research is increasingly conducted to understand complex health problems and interventions. This raises questions for ethnographers, funders and users of ethnographic research about what ethnography is, how it is conducted, the nature of ethnographic representations and styles (compared to other texts), how to address ethical questions that arise, and the nature of the ethnographic data that are produced.

This reading group offers an opportunity to consider these questions, and more, through critical reading of ethnographies related to health, including classic and contemporary ethnographies.

The reading group is open to anyone researching or interested in social studies of health, science, medicine and healthcare. Participants are expected to have read the agreed reading to participate.

A list of readings will be circulated at the beginning of the academic year.

RESEARCHING VULNERABLE POPULATIONS

SKILLS FORGE REFERENCE: LISS309

Course convener: Dr Hanna Kienzler

Department: King's Global Health & Social Medicine

Type of event: 5 day course

Term: Summer

This module will be problem-focused and examine a series of common debates surrounding researching vulnerable populations in a contemporary and forward-looking context. The module will explore contrasting responses from different interest groups (e.g. patients, healthy participants, researchers and professional bodies) and theoretical standpoints, including the social and behavioural sciences, and public and social policy, where appropriate.

The contexts and questions that are the subject of social science and health research have increased phenomenally, against a background of new legislation (e.g. Mental Capacity Act 2005), research governance (e.g. Ethics Committee approval) and clinical imperatives (e.g. understanding how best to provide health and social care for increasing numbers of older people with dementia). This raises many complex issues for research staff in health and social sciences, particularly when working with people or in situations where vulnerability is a key issue. This module has been designed to focus on understanding and responding to these complexities. Students will focus on relevant guidelines and policies, the implications that exist for individuals,

families, public and private sectors, and how they might ensure the safety and protection of participants and the researcher. Real research situations will be used to convey and debate ethical imperatives throughout the research process.

HOW TO MAKE A FILM WITH NO IDEA ABOUT FILM-MAKING

SKILLS FORGE REFERENCE: LISS342

Course convener: Dr Sophie Harman

Department: QMUL Politics & International Relations

Type of event: 1 day course

Term: Spring

The aim of this workshop is to reflect, demystify and advise on how to make a film as a non-film-maker. Based on convener Sophie Harman's experiences of producing the feature length drama *PILL*, Harman provides practical advice (budgets, crew, stages of production) and questions to consider (ethics, audience, distribution) before embarking on film production. The workshop combines short presentations by the convener and individual and group exercises to help participants identify a potential film topic and suitable film format and promote awareness of the ethical and practical challenges of filmmaking in global health. The workshop is aimed at people with no or minimal experience of film-making but will also be of interest to established film-makers wanting to produce a film in East Africa or in partnership with academia.

DESIGNING & USING FOCUS GROUPS

SKILLS FORGE REFERENCE: LISS344

Course convener: Susie Fisher, The Susie Fisher Group

Department: external expert

Type of event: 3 day course

Term: Spring

This is a hands-on course designed to train you in the skills needed to design and conduct a qualitative research project using focus groups. You will learn how to set up focus groups: draft objectives, define and recruit the sample and write the discussion guide. You will learn and practise different techniques for moderating groups and you will consider how to analyse focus group data: what you can say and what you can't. The course participants will run a real (short) project for an external client and will report findings to this client at the end of the process. In parallel, participants will prepare a focus group project relating to their own research, which they can use at a future date. At the end of the course you will have experienced all stages of a focus group project from the perspectives of moderator, group participant and client. You will also be equipped with a detailed project structure for focus groups relating to your own research.

ADVANCED QUANTITATIVE METHODS

GEOGRAPHIC INFORMATION SYSTEMS 1: DATA

SKILLS FORGE REFERENCE: LISS236

Course convener: TBD

Department: King's Geography

Type of event: 4 x 2 hour course

Term: Spring

The course introduces students to spatial data management in the context of Geographic Information Systems (GIS). The role and functionality of GIS will be described theoretically and demonstrated practically using the most commonly used proprietary and open source GIS packages including ArcView, ArcGIS, SAGAGIS and QGIS. At the end of this course students should be able to: plan, capture and manage spatial GIS data from a variety of sources (e.g. digitising, GPS, remote sensing), assess spatial data quality, manage data within a GIS environment.

Session 1: Introductions to – and demonstrations of – GIS.

Session 2: Introducing GIS data.

Session 3: Coordinate systems and GPS.

Session 4: Reprojecting data, Georeferencing images and Google Earth.

GEOGRAPHIC INFORMATION SYSTEMS: RASTER & VECTOR ANALYSES

SKILLS FORGE REFERENCE: LISS237

Course convener: TBD

Department: King's Geography

Type of event: 5 x 2 hour course

Term: Spring

The course introduces students to spatial analysis in the context of Geographic Information Systems (GIS). The role and functionality of GIS will be described theoretically and demonstrated practically using the most commonly used proprietary and open source GIS packages including ArcView, ArcGIS, SAGAGIS and QGIS. At the end of the course students should be able to: carry out spatial analysis, spatial queries and spatial data modelling and understand the role of GIS in spatial planning and decision making processes.

Course Outline: The following topics will be covered:

- Interpolation of rasters and spatial analysis
- Interpolation and data analysis practicals
- Data workshops
- Terrain analysis and cartographic modelling with rasters
- Solving spatial problems and GIS to case studies

SOCIAL NETWORK ANALYSIS

SKILLS FORGE REFERENCE: LISS238

Course conveners: Dr Eelke Heemskerk & Dr Frank Takes

Department: Political Science, University of Amsterdam

Type of event: 2 day course

Term: Autumn

This course familiarises PhD students with the main network theories in social science and develop basic skills in network analysis. After completion you are familiar with the theoretical and methodological underpinnings of the social network perspective and are able to conduct a basic network analysis. Throughout the course we will focus on applying SNA to empirical data, where possible related to the students own research.

The course starts with an overview of social network theory and basic concepts in SNA. We contextualise SNA within the social sciences, exploring differences between the focus on social relations and approaches that focus on individual attributes. Students will then be presented with examples of important contributions that SNA has made to our understanding of human society. Finally, fundamental concepts used to describe network topologies will be introduced. From this we move to an introduction in several network analysis methods and measures. Key issue here is how to find the best match between methods and techniques on the one hand, and your research question and type of data on the other. This also addresses issues such as 'what type of empirical data is suited for SNA?'

and 'how does one collect and prepare data for analysis?' Students will become familiar with social network theory and analysis as a practical set of research instruments to empirically investigate the theoretical questions. They will learn how to analyse network structures (for instance centrality; community detection) and visualize these networks using Gephi software.

DATA MANAGEMENT & MANIPULATION

SKILLS FORGE REFERENCE: LISS242

Course convener: TBD

Department: King's Global Health & Social Medicine

Type of event: 5 day course

Term: Summer

This course will develop researchers' knowledge and use of large social science datasets. Researchers will be able to understand how complex social science large scale datasets are structured and critically engage with the implications of this. They will develop the skills to manipulate, recode and compute variables and learn how to deal with missing data. They will also learn how to combine datasets, and aggregate and disaggregate data from different files in a relational database, as well as how to transform the structure of datasets from long form to short form and vice versa. Researchers will gain practical experience and skills of how to manipulate complex datasets to answer questions of importance in the context of health and social research.

This course is suitable for students with basic statistical knowledge. Prior to entry students must be able to demonstrate:

- They understand the concepts behind basic descriptive and inferential statistics for social science research, and how to interpret these statistics.
- They understand the principles of correlation, t-tests, chi-square and regression in social science research, and how to interpret these tests.
- Competence in a basic level of data manipulation using STATA to prepare social science datasets for statistical analysis such as designation of missing data, transformations of data, and conditional recode and compute commands.
- Competence in the use of statistical software STATA to interrogate social science datasets using descriptive statistics and commonly used statistical tests.

PANEL DATA

SKILLS FORGE REFERENCE: LISS244

Course convener: Professor Mary O'Mahony

Department: King's Business School

Type of event: 2 day course

Term: Summer

The course is a two-day statistical workshop on panel data analysis including an introduction to using the Stata software. It will include both taught and practical exercises using data series distributed by the module leader. The taught component will begin with a review of multiple regression and significance

testing. Examples of panel data will be presented followed by the main estimation methods. The emphasis in the practical component is on interpreting results using secondary data series. The course takes students through the use of Stata, organising and handling economic data, common commands and how to undertake panel data techniques. By the end of the two sessions students should have a good understanding of how to handle panel data and be able to run their own regressions on panel data using Stata.

STRUCTURAL EQUATION MODELLING USING MPLUS

SKILLS FORGE REFERENCE: LISS245

Course convener: Dr Martin Edwards

Department: King's Business School

Type of event: 5 day course

Term: Summer

This course covers structural equation modelling (SEM) using Mplus. It will include both taught and practical elements and will focus mainly on the analysis of questionnaire data. This course is an extended version of the older course, which was limited to introducing SEM with Mplus, setting up simple Confirmatory Factor Analysis Models, basic Path Analysis and Structural Equation Models and a short lecture on "further issues". This new, extended version of the course will cover more advanced and sophisticated material such as mediation analysis, longitudinal CFA and latent class analysis.

Day 1 Introduction to CFA and Structural Equation Modelling with M-plus, M-plus Data Management and file building, Importing Data into Mplus from SPSS – Practical, Path Analysis

Day 2 Confirmatory Factor Analysis and M-plus, Full Structural Equation Modelling & M-plus, Multi-Group analysis

Day 3 Mediation analysis and testing for indirect effects, bootstrapped, Moderation/interaction analysis with M-plus

Day 4 Longitudinal CFA - Auto Correlation, Longitudinal Path analysis – Cross lagging, Longitudinal SEM, Latent Growth Models

Day 5 Latent Class Analysis, Growth Mixture Modelling, Testing for Common Method Variance

TIME SERIES ECONOMETRICS & DYNAMIC PANELS

SKILLS FORGE REFERENCE: LISS247

Course convener: Dr Michela Vecchi

Department: Middlesex Business School

Type of event: 2 day course

Term: Summer

The course is a two-day STATA workshop on time series econometrics and dynamic panel analysis. It will include both taught and practical exercises using data series distributed by the module leader. The taught component will begin with a review of time series econometrics, stationarity and cointegration tests. It will then focus on stationarity issues in panel data and on the various econometric techniques that researchers use to estimate dynamic relationships with panel data. The course

will use practical examples in the taught component and in the lab session to provide students with an overview of applications. The emphasis in the practical component is on interpreting results using secondary data series. The course will show students the main STATA commands and new users-developed commands that can be downloaded from the STATA website. By the end of the two sessions students should have a good understanding of how to test for stationarity and cointegration in time series and panel data and run a variety of regression model using STATA.

REGRESSION USING CATEGORICAL DEPENDENT VARIABLES

SKILLS FORGE REFERENCE: LISS248

Course convener: Dr Christian Darko
Department: Management, University of Birmingham
Type of event: 2 day course
Term: Summer

The course is a two-day statistical workshop on regression analysis with categorical dependent variables using the STATA software. It will include both taught and practical exercises using data series distributed by the module leader. The taught component will begin with an overview of the most commonly used regression models for categorical outcomes: binary logit and probit, ordinal logit and probit and multinomial logit. Example data will be used to explore these estimation methods. The emphasis in the practical component is on the application of appropriate techniques and

interpreting results using secondary data. The course assumes that students have prior knowledge of common commands in STATA to organise and handle data and undertake standard regression techniques. By the end of the two sessions students should have a good understanding of how to run their own regressions with categorical dependent variables using STATA and how to interpret their results.

ECONOMETRIC METHODS FOR CAUSAL INFERENCE

SKILLS FORGE REFERENCE: LISS249

Course convener: TBD
Department: TBD
Type of event: 2 day course
Term: Summer

This course is a two-day applied econometrics workshop that provides an introduction to and overview of regression based evaluation methods for assessing causal effects. The course starts by introducing the problem of identifying treatment effects in a quasi-experimental setting as compared to an experimental setting. We explore methods for taking into account selection (into treatment) on observables, including matching techniques. We then consider methods for taking into account selection on unobservables, including difference-in-differences, instrumental variables and regression discontinuity design. We discuss typical limitations and interpretation of treatment effects. The course comprises a taught component and a number of practical exercises using STATA, using data sets distributed by

the module leader. By the end of the course students should have a good understanding of the basic impact evaluation problem and the main methods used to address this problem. They should be in a position to design and implement identification strategies for the assessment of causal effects and critically evaluate and interpret the output of such analyses. The course does not cover experimental methods.

INTERMEDIATE QUANTITATIVE ANALYSIS WITH SPSS & PROCESS: MEDIATION & MODERATION

SKILLS FORGE REFERENCE: LISS250

Course convener: Dr Mike Clinton

Department: King's Business School

Type of event: 3 day course

Term: Spring

The aim of this intermediate-level workshop is to firstly develop a conceptual understanding of mediation and moderation and how each may be useful to answer theoretical questions in the social sciences regarding mechanisms of association and boundary conditions of effects. Secondly, the workshop seeks to develop practical analytical skills in running advanced regression, mediation, moderation and moderated mediation statistical models in both SPSS and PROCESS, which is an SPSS add-on.

DAY 1

AM session: Fundamentals of Multiple and Hierarchical Regression

PM session: Simple Mediation Analysis in SPSS

DAY 2

AM session: Mediation Analysis in PROCESS

PM session: Moderation Analysis in SPSS

DAY 3

AM session: Moderation Analysis in PROCESS

PM session: Moderated-Mediation Analysis in PROCESS



**Additional,
complementary
doctoral
programming**

LISS DTP is unable to provide advanced training in every social science research method or approach, but as part of the **ESRC's Research Training Network**, students within our partnership can access the very extensive range of short courses run by the **ESRC's National Centre for Research Methods (NCRM)**. Full details can be found at www.ncrm.ac.uk Please note, these courses often charge fees whereas general LISS DTP programming does not.

Alongside the Masters programmes, core and advanced academic training offered by LISS DTP, each university in the partnership has its own programming to assist with students' professional development.

King's

The Centre for Doctoral Studies offers a wide range of training and development opportunities that will help you develop your career in research.

Its mode of delivery encompasses face-to-face courses, online learning & webinars and cover themes such as:

- Careers & Employability
- Communication & Impact
- Doctoral Essentials
- IT Essentials
- Personal Effectiveness
- Resilience & Wellbeing
- Statistics & Data Management
- Writing & Publishing

The Centre for Doctoral Studies' Training for Postgraduate Research Students programme also provides one-to-one, personalised sessions with a dedicated careers consultant, or one of two professional writers, who help students to write with greater clarity. All details can be found at: www.kcl.ac.uk/study/doctoral-studies/doctoral-training It is recommended that King's PhD students spend 10 days per academic year (pro-rata for part-time students) undertaking professional development training.

Queen Mary

The Researcher Development Programme is a series of workshops and training courses run by the Centre for Academic & Professional Development and designed to help you to recognise and develop key skills and attributes needed to effectively manage your research, and to prepare and plan for the next stages of your career. It also provides opportunities for you to meet other research students and post-docs from different departments and campuses, which can be a valuable and interesting experience.

Courses include:

- Managing your research project
- Making the most of your first academic conference
- Planning and managing your ethical research project
- Presenting your research to an audience
- Reading strategically and analytically
- Managing your time and workload effectively
- Engaging the public with your research
- Habits of effective writers
- Negotiating and influencing skills
- Writing your thesis
- Preparing for your viva
- Academic career planning for PhD students
- Career options beyond academia
- Interview skills for PhD students

<https://academicdevelopment.qmul.ac.uk/researcher-development>

All full-time PhD students at Queen Mary are expected to take part in two weeks of transferable skills training activities per academic year (part-time students should complete a pro-rata rate of training as appropriate). Suggested activities include attending and presenting at conferences, participating in or helping to organise journal clubs, writing groups and seminar series, and attending training courses or workshops. Selection of appropriate activities and courses should form part of your relationship with your supervisor.

Imperial

The Graduate School offers a wide range of teaching modes, including; residential retreats, international global fellows programmes, short workshops (face-to-face), webinars and online courses. The Graduate School's doctoral professional skills course provision is grouped into the following categories:

- Writing for Success
- Perfecting Presentations
- Communicating with a Wider Audience
- Maximising Management Skills
- Careers
- Computing
- Enterprise and Entrepreneurship
- Information Management
- Mini MBA
- Research Skills for Social Sciences and Medicine
- Statistics
- Teaching
- Finish Up and Move On

The Graduate School also offers a range of other provisions to enhance the student experience whilst they are undertaking their doctoral degree at Imperial College London. These initiatives include:

- Accredited Graduate Teaching Assistant (GTA) Programme
- Research Community Fund – Students can apply for funding to arrange student-led events and activities: www.imperial.ac.uk/study/pg/graduate-school/community-support/cohort-building/research-community-fund
- Doctoral Student Coaching Programme

All doctoral students registered at Imperial College London will need to undertake a minimum attendance requirement to meet their PhD regulations, full details can be found on the Graduate School's website: www.imperial.ac.uk/study/pg/graduate-school/students/doctoral/professional-development



Key contacts & links

Professor Leila Simona Talani
LISS DTP Director

King's College London

E. leila.talani@kcl.ac.uk

T. +44 (0)20 7848 7382

Simona Talani is a Professor of International Political Economy within the department of European & International Studies. As Director, she has strategic oversight of the LISS DTP.

Dr Linnaea Stockall
LISS DTP Deputy Director

Training & Cohort Development

Queen Mary University of London

E. l.stockall@qmul.ac.uk

T. +44 (0)20 7882 5742

Linnaea Stockall is a senior lecturer in the Department of Linguistics. Linnaea is responsible for overseeing LISS DTP's training programme (including research funding) for all students as well as cohort development activities.

Dr Arnab Majumdar
LISS DTP Deputy Director

External Partnerships

Imperial College London

Jane Gawthrop
LISS DTP Manager

King's College London

E. Jane.Gawthrop@kcl.ac.uk

T. +44 (0)20 7848 3745

Jane joined King's College London in September 2019 from Royal Holloway, University of London. Jane will have strategic oversight for the administration of studentships, competitions and ESRC budget.

Emma Buckley-Watson MAUA
LISS DTP Coordinator

King's College London

E. emma.buckley-watson@kcl.ac.uk

T. +44 (0)20 7848 3747

Emma joined King's College London's single institution doctoral training centre, KISS DTC in November 2011 as the Manager. She coordinates the administration of the partnership, along with overseeing communications and social media.

Angela Kamara
LISS DTP Administrator

Queen Mary University of London

E. a.kamara@qmul.ac.uk

T. +44 (0)20 7882 6469

Louise Sherlock
LISS DTP Administrative Contact

Imperial College London

E. l.sherlock@imperial.ac.uk

T. +44 (0)20 7594 2769

Useful Links to additional training across the partnership and beyond

Economic and Social Research Council (ESRC)

www.esrc.ac.uk

National Centre for Research Methods (NCRM)

www.ncrm.ac.uk

Imperial College London

Graduate School

www.imperial.ac.uk/study/pg/graduate-school

Careers Service

www.imperial.ac.uk/careers

Queen Mary University of London

PhD Researcher Development

<https://academicdevelopment.qmul.ac.uk/researcher-development>

Careers & Enterprise

www.careers.qmul.ac.uk

King's College London

Centre for Doctoral Studies

www.kcl.ac.uk/study/doctoral-studies/index.aspx

King's Careers & Employability

www.kcl.ac.uk/campuslife/services/careers

Get involved with LISS DTP

Activities and contributions from staff and students are vital to the **LISS DTP portfolio** of **seminars, workshops, reading groups** and **short courses**. If you would like to offer some sessions on an approach or a method in which you are expert, or if you're thinking about a reading group focusing on a topic or an author that you are keen to explore, we can provide support, helping you to connect with others across the partnership and beyond.

If you have an idea for a course, event, seminar series or reading group, you can tell us about it via our online form: <https://qmul.onlinesurveys.ac.uk/liss-dtp-course-proposal>



NOTES

KEEP IN TOUCH

For the latest **LISS DTP** news, follow us on **Twitter @LISSDTP**,
'Like' us at **facebook.com/lissdtp**, and join our **LinkedIn** network
at **linkedin.com/in/lissdtp**